

**For a Free Quote:**

**Web: [EnergyPal.com/solar](http://EnergyPal.com/solar)**

**Call: 1-800-990-3725**

**Email: [contact@energypal.com](mailto:contact@energypal.com)**

# **EnergyPal**

## **Solar Panel Guide Specification Data Sheet**

**Anhui Uzon Photovoltaic Technology Co., Ltd.**

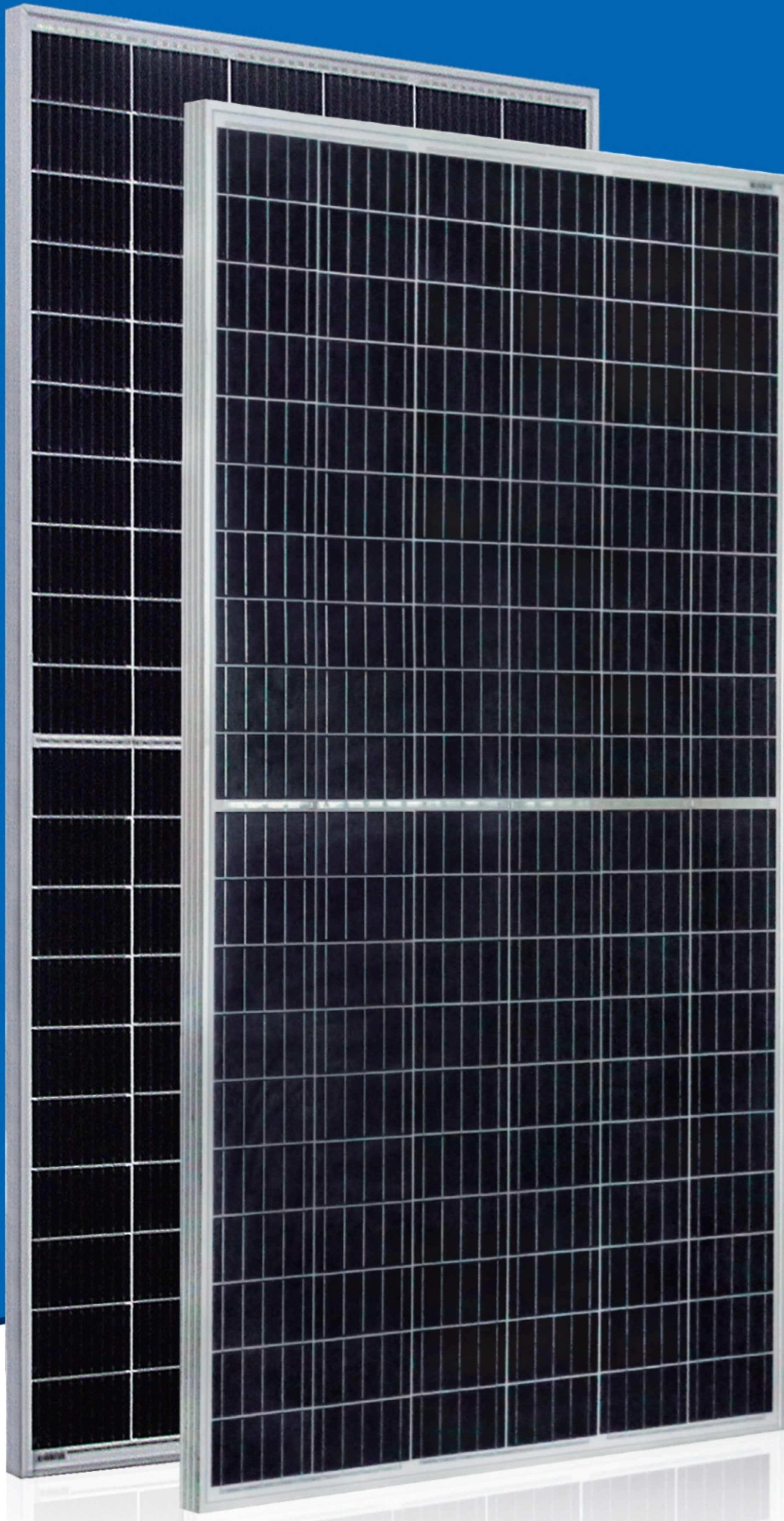
**UZ156PHC285-300-60-5BB**

**UZ156PHC300-60**

Also available on the web at  
[EnergyPal.com/anhui-uzon-photovoltaic-technology-co-ltd-solar-panels/uz156phc300-60](http://EnergyPal.com/anhui-uzon-photovoltaic-technology-co-ltd-solar-panels/uz156phc300-60)

# UzonSemi™

Incredible Power for Small Body

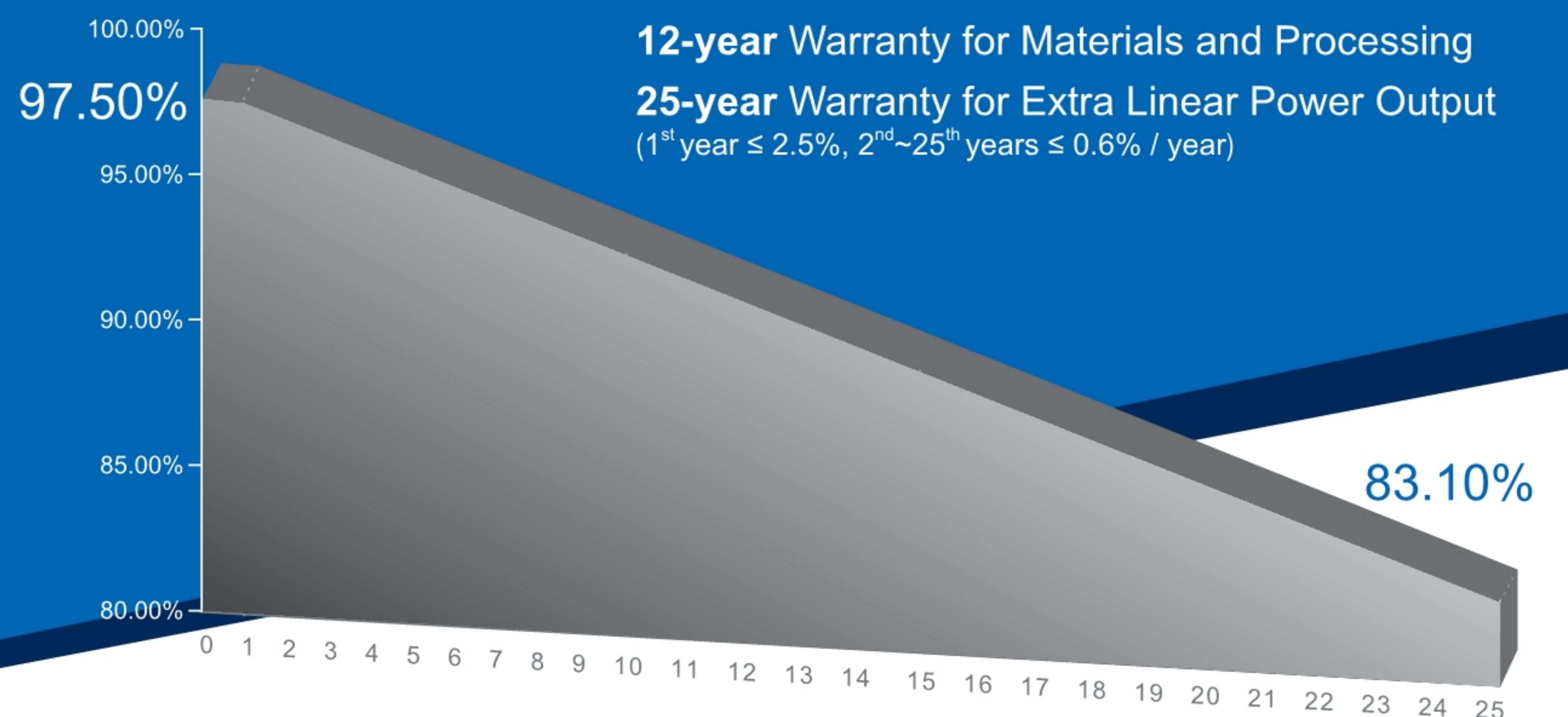


Multi-Busbar Module could be the option

## 285W~300W

Polycrystalline PV Module

UZIP300-60HC Series (156.75)



### KEY FEATURES

- +5W OUTPUT POSITIVE TOLERANCE**  
Guaranteed 0~+5W positive tolerance ensures power output reliability.
- INNOVATIONAL HALF-CELL TECHNOLOGY**  
Improves the module output, decreases the risk of micro-crack, enhances the module reliability.
- PERC INNOVATIVE PERC CELL TECHNOLOGY**  
Excellent cell efficiency and output.
- REDUCE SHADOW LOSS**  
Effectively reduces the effect of shadow on the module surface.
- REDUCE INTERNAL MISMATCH LOSS**  
Reduces mismatch loss and improves output.
- PASSED HAIL TEST**  
Certified to hail resistance: ice ball size (d=45mm) and ice ball velocity (v=30.7m/s).
- Anti PID PID RESISTANCE**  
Excellent PID resistance at 96 hours (@85°C /85%) test, and also can be improved to meet higher standards for the particularly harsh environment.

### COMPREHENSIVE CERTIFICATES



For Global Market

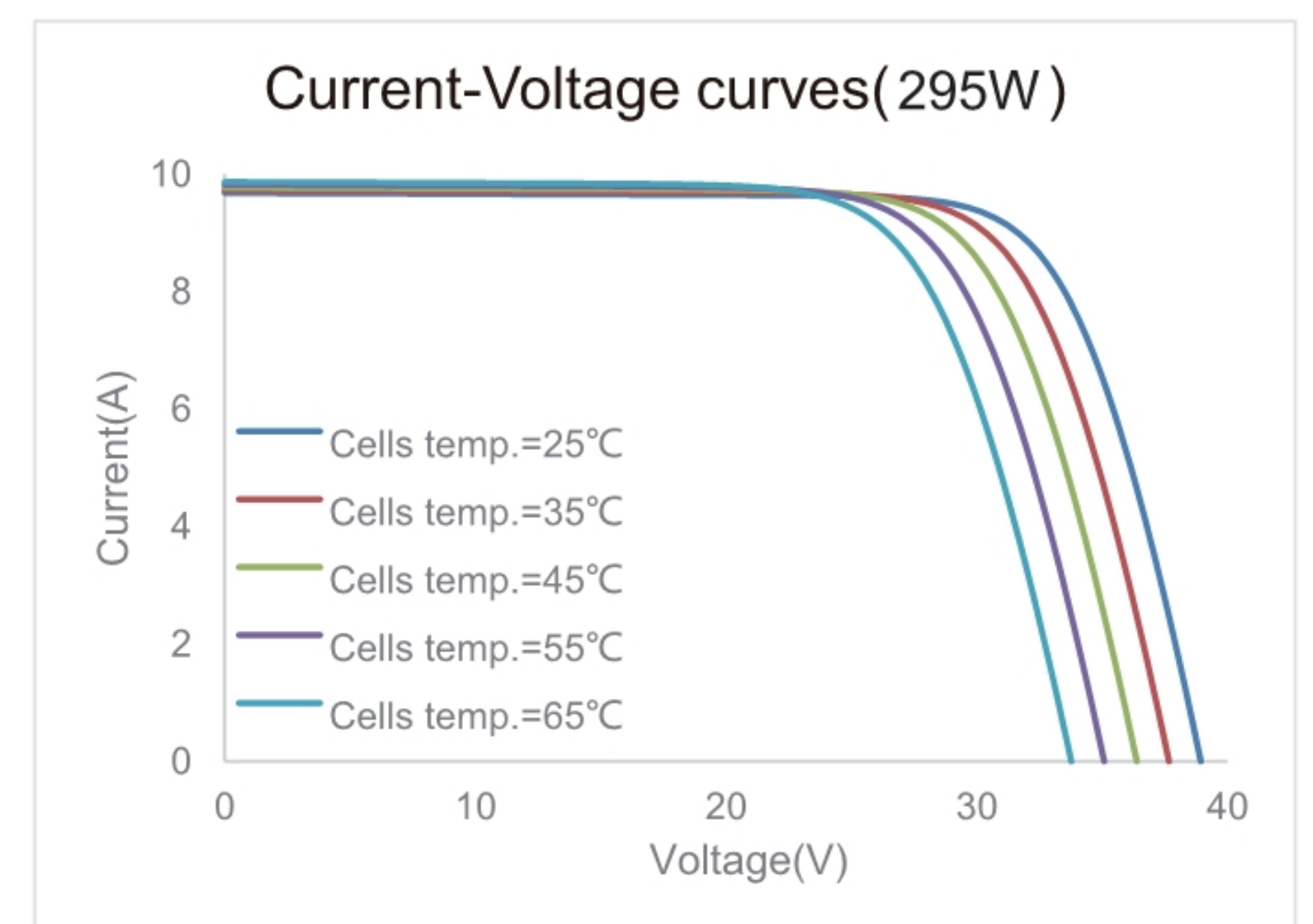
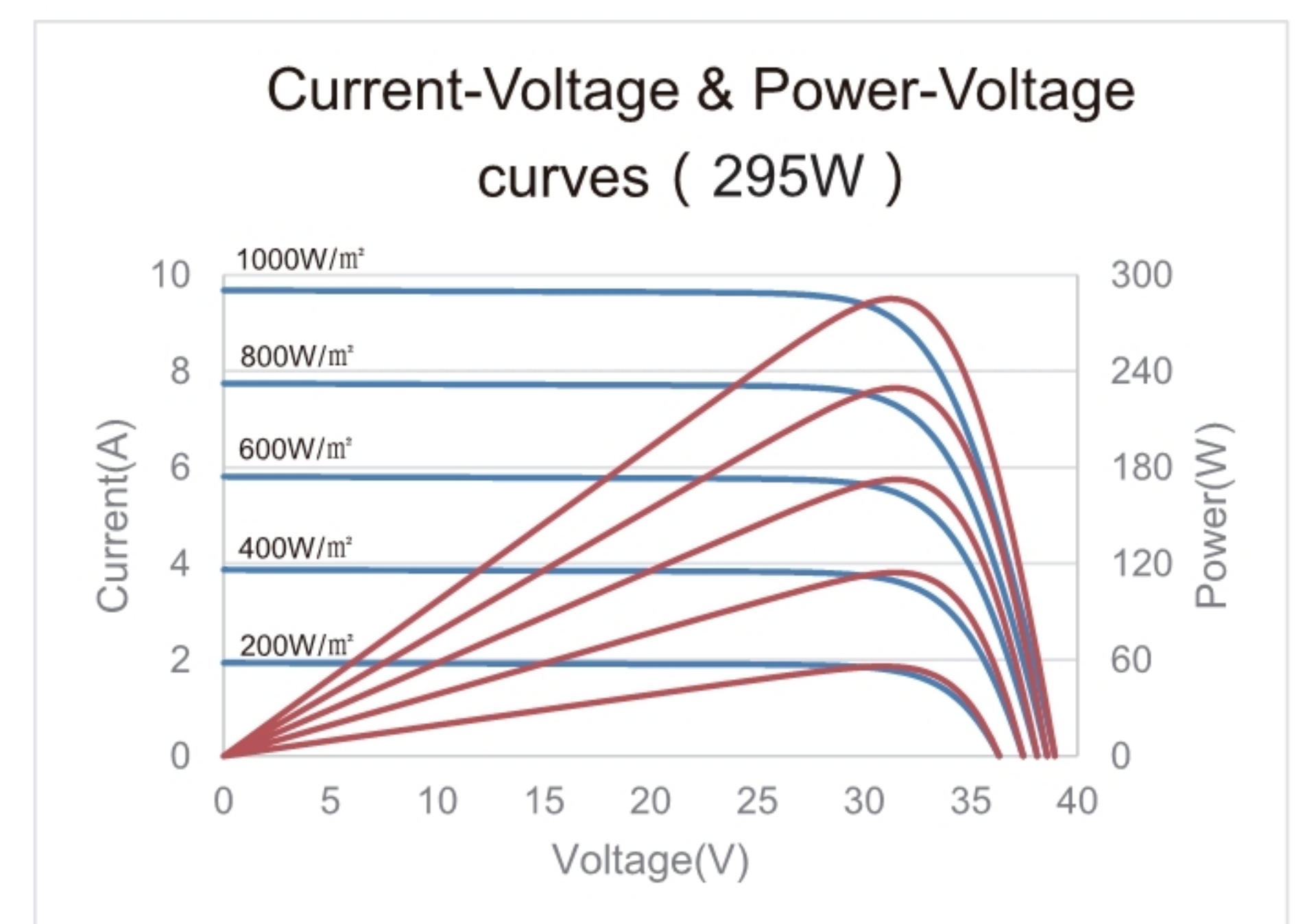
## ELECTRICAL SPECIFICATIONS

|   |                     |          |          |          |
|---|---------------------|----------|----------|----------|
| STC rated output ( $P_{mpp}$ )*             | 285 Wp              | 290 Wp   | 295 Wp   | 300 Wp   |
| Rated voltage ( $V_{mpp}$ ) at STC          | 32.12 V             | 32.34 V  | 32.56 V  | 32.78 V  |
| Rated current ( $I_{mpp}$ ) at STC          | 8.87 A              | 8.97 A   | 9.06 A   | 9.16 A   |
| Open circuit voltage ( $V_{oc}$ ) at STC    | 38.65 V             | 38.90 V  | 39.14 V  | 39.39 V  |
| Short circuit current ( $I_{sc}$ ) at STC   | 9.34 A              | 9.43 A   | 9.52 A   | 9.60 A   |
| Module efficiency                           | 17.2%               | 17.5%    | 17.8%    | 18.1%    |
| Rated output ( $P_{mpp}$ ) at NMOT          | 212.3 Wp            | 216.0 Wp | 219.7 Wp | 223.5 Wp |
| Rated voltage ( $V_{mpp}$ ) at NMOT         | 29.83 V             | 30.02 V  | 30.23 V  | 30.41 V  |
| Rated current ( $I_{mpp}$ ) at NMOT         | 7.12 A              | 7.20 A   | 7.27 A   | 7.35 A   |
| Open circuit voltage ( $V_{oc}$ ) at NMOT   | 36.21 V             | 36.45 V  | 36.67 V  | 36.90 V  |
| Short circuit current ( $I_{sc}$ ) at NMOT  | 7.54 A              | 7.61 A   | 7.69 A   | 7.75 A   |
| Temperature coefficient ( $P_{mpp}$ )       | - 0.3550%/°C        |          |          |          |
| Temperature coefficient ( $I_{sc}$ )        | +0.0415%/°C         |          |          |          |
| Temperature coefficient ( $V_{oc}$ )        | - 0.2729%/°C        |          |          |          |
| Nominal module operating temperature (NMOT) | 44 ±2°C             |          |          |          |
| Maximum system voltage (IEC/UL)             | 1500V <sub>DC</sub> |          |          |          |
| Number of diodes                            | 3                   |          |          |          |
| Junction box IP rating                      | IP 67               |          |          |          |
| Maximum series fuse rating                  | 15 A                |          |          |          |

STC: Irradiance 1000W/m<sup>2</sup>, Cell Temperature 25°C, AM=1.5

NMOT: Irradiance 800W/m<sup>2</sup>, Ambient Temperature 20°C, AM=1.5, Wind Speed 1m/s

## CURVE



## MECHANICAL SPECIFICATIONS

|                                |  |
|--------------------------------|--|
| Outer dimensions (L x W x H)   | 1675 x 992 x 35 mm<br>65.94 x 39.06 x 1.38 in                |
| Frame technology               | Aluminum, silver anodized                                    |
| Module composition             | Glass / EVA / Backsheet (white)                              |
| Front glass thickness          | 3.2 mm / 0.13 in   |
| Cable length (IEC/UL)          | Portrait: 350 mm (13.78 in)<br>Landscape: 1000 mm (39.37 in) |
| Cable diameter (IEC/UL)        | 4 mm <sup>2</sup> / 12 AWG                                   |
| ① Maximum mechanical test load | 5400 Pa (front) / 2400 Pa (back)                             |
| Fire performance (IEC/UL)      | Class C (IEC) or Type 1 (UL)                                 |
| Connector type (IEC/UL)        | MC4 compatible   |

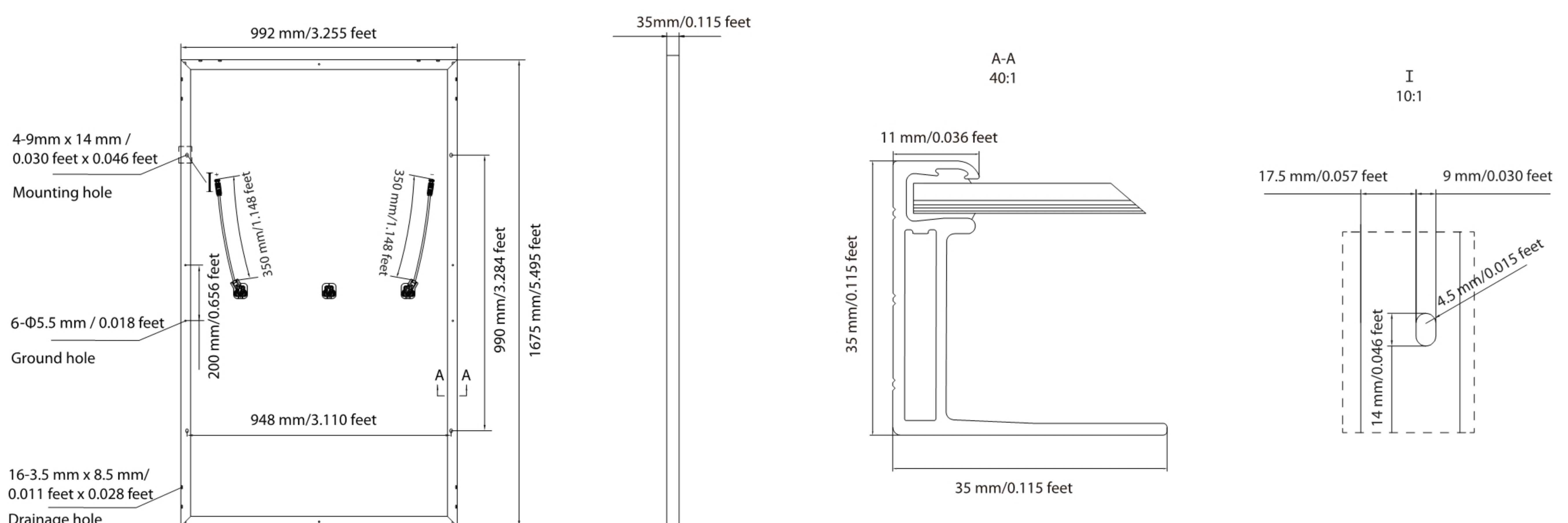
① Refer to Crystalline Silicon PV Module Installation Manual or contact technical department.  
Maximum Mechanical Test Load=1.5×Maximum Mechanical Design Load.

## PACKING SPECIFICATIONS

|  |                     |
|--|---------------------|
| ① Weight (module only)                       | 18.7 kg / 41.23 lbs |
| ② Packing unit                               | 31 pcs / box        |
| Weight of packing unit (for 40'HQ container) | 619 kg / 1365 lbs   |
| Number of modules per 40'HQ container        | 806 pcs             |

① Tolerance +/- 1.0kg  
② Subject to sales contract

## MODULE DIMENSION DETAILS



© Uzon PV (Anhui) Co., Ltd. Reserves the right of final interpretation. please contact our company to use the latest version for contract.