

For a Free Quote:

Web: **EnergyPal.com/solar**

Call: **1-800-990-3725**

Email: **contact@energypal.com**

EnergyPal

Solar Panel Guide Specification Data Sheet

Venergy Solar Industry Company Limited

VES-6MA-HV 350-360W

VES-360-6MA-HV

Also available on the web at
EnergyPal.com/venergy-solar-industry-company-limited-solar-panels/ves-360-6ma-hv



350-360W



MANAGEMENT SYSTEM

- ISO 9001: Quality management system
- ISO 14001: Standard for environmental management system
- OHSAS 18001: International standard for occupational health and safety assessment system

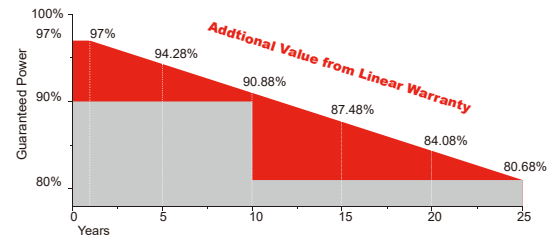
PRODUCT CERTIFICATES



INSURANCE



WARRANTY



10 YEARS Guarantee on product material and workmanship

25 YEARS linear power output warranty

Safety

1500V Withstand and applicable up to 1500V high system voltage

NEW -IEC- Tested and certified according to newest IEC standard IEC61730-1:2016 IEC61730-2:2016

G Class C fire safety class

Reliability

NEW -IEC- Tested and certified according to newest IEC standard IEC61215:2016

1st World 1st company to pass "Thresher Test" and "On-site Power Measurement Validation" certificate

\$/€/£ BANKABLE Bankable products

Performance

Advanced Outstanding power output capability at low irradiance

Triple 100% Electroluminescence (EL) tests minimize breakage rate

Photon LABORATORY TOP Top rank in Photon yield measurement

VES-6MA-HV SERIES 6 INCH 72 CELLS



*BLACK FRAME / BLACK BACK-SHEET PRODUCTS ARE AVAILABLE UPON REQUEST.

Electrical Characteristics(STC)

Module Type	VES-350-6MA-HV	VES-355-6MA-HV	VES-360-6MA-HV
Maximum Power at STC - P_{mp} (W)	350	355	360
Open Circuit Voltage - V_{oc} (V)	47	47.2	47.4
Short Circuit Current - I_{sc} (A)	9.51	9.61	9.70
Maximum Power Voltage - V_{mp} (V)	38.1	38.3	38.5
Maximum Power Current - I_{mp} (A)	9.19	9.27	9.36
Module Efficiency STC- η_m (%)	17.91	18.17	18.42

STC: Irradiance 1000 W/m² module temperature 25°C AM=1.5;
Power measurement tolerance: +/-3%

Electrical Characteristics(NOCT)

Module Type	VES-350-6MA-HV	VES-355-6MA-HV	VES-360-6MA-HV
Maximum Power at NOCT - P_{mp} (W)	260	263	267
Open Circuit Voltage - V_{oc} (V)	43.4	43.6	43.8
Short Circuit Current - I_{sc} (A)	7.68	7.75	7.84
Maximum Power Voltage - V_{mp} (V)	35.8	35.9	36.1
Maximum Power Current - I_{mp} (A)	7.27	7.33	7.40

NOCT: Irradiance 800 W/m² ambient temperature 20°C wind speed : 1m/s
Power measurement tolerance: +/-3%

Power Tolerance (W)	(0,+4.99)
Maximum System Voltage (V)	1500 (TÜV)
Maximum Series Fuse Rating (A)	20

Temperature Characteristics

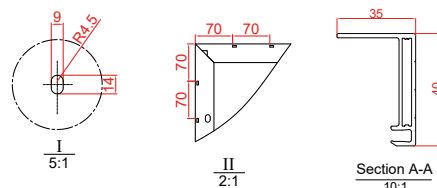
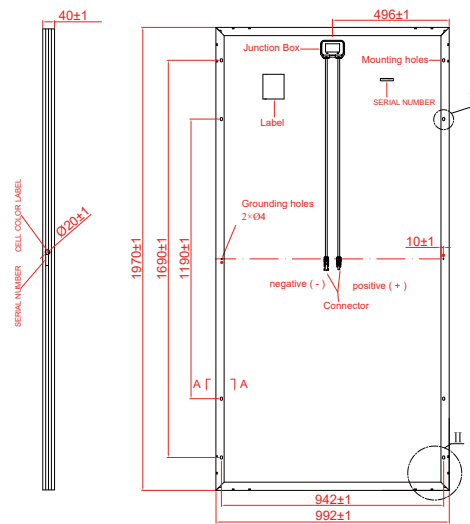
Pmax Temperature Coefficient	-0.40 %/°C
Voc Temperature Coefficient	-0.32 %/°C
Isc Temperature Coefficient	+0.05 %/°C
Operating Temperature	-40~+85 °C
Nominal Operating Cell Temperature (NOCT)	45±2 °C

Packing Configuration

	1970 x 992 x 40mm	
Container	20'GP	40'GP
Pieces per Pallet	27	27
Pallets per Container	10	22
Pieces per Container	270	594

Mechanical Specifications

External Dimensions	1970 x 992 x 40 mm
Weight	23 kg
Solar Cells	Mono crystalline 156.75 x 156.75 mm (72pcs)
Front Glass	3.2 mm tempered glass, low iron
Frame	Anodized aluminium alloy
Junction Box	IP67
Output Cables	4.0 mm ² , cable length: 1100 mm
Connector	MC4 Compatible
Mechanical Load	5400 Pa



* All Dimensions in mm

* The above drawing is a graphical representation of the product.
For engineering quality drawings please contact VENERGY.

I-V Curve(VES-350-6MA-HV)

