

**For a Free Quote:**

**Web: [EnergyPal.com/solar](http://EnergyPal.com/solar)**

**Call: 1-800-990-3725**

**Email: [contact@energypal.com](mailto:contact@energypal.com)**

# **EnergyPal**

## **Solar Panel Guide Specification Data Sheet**

**VacSol GmbH**

**VSM6-210-240**

**VSM6-235**

Also available on the web at  
[EnergyPal.com/vacsol-gmbh-solar-panels/vsm6-235](http://EnergyPal.com/vacsol-gmbh-solar-panels/vsm6-235)

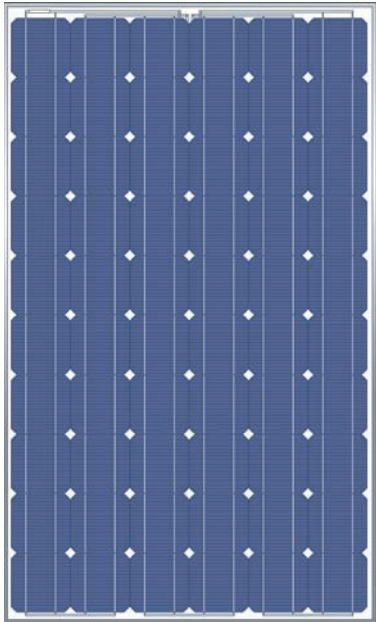
# VSM6

210/215/220/225  
230/235/240



# VacSol

## SOLAR PHOTOVOLTAIC MODULE



### PRODUCT OVERVIEW

- VacSol PV modules are optimally manufactured and adjusted to meet the needs of the current market; Module designed for easy installation.
- The continuous efforts in quality assurance system and certifications, the international authentication institutions of VacSol' s products demonstrate our commitment to product quality and customer requirements

### MODULE CHARACTERISTICS

- Assembled by high efficiency crystalline silicon cells
- Two types: mono-crystalline and multi-crystalline
- Power range of standard module: 155W-240W (power output depends on efficiency and type of cells used)
- With or without screw frame design, strong mechanical resistance
- High transmission low iron tempered glass strong mechanical resistance
- Standard waterproof junction box, with bypass diode, which protects the module from burning caused by hot-spot effect because of shading
- High endurance to different atrocious weather, passed the IEC 61215 & IEC61730 performance test and UL1703 safety test
- 5-year quality guarantee and 10 - 25-year power output guarantee

### ELECTRICAL PARAMETER

TYPE	VSM6-210	VSM6-215	VSM6-220	VSM6-225	VSM6-230	VSM6-235	VSM6-240
Rated Maximum Power at STC	210W	215W	220W	225W	230W	235W	240W
Open Circuit Voltage (Voc)	36.60	36.77	36.94	37.11	37.28	37.45	37.62
Maximum Power Voltage (Vmp)	29.40	29.60	29.80	30.00	30.20	30.40	30.60
Maximum Power Current (Imp)	7.14	7.26	7.38	7.50	7.62	7.73	7.84
Short Circuit Current (Isc)	8.10	8.16	8.25	8.33	8.42	8.50	8.59
Power Tolerance	±3%						
αPm	-0.47%/°C						
γVoc	-0.33%/°C						
δIsc	+0.036%/°C						



# VSM6

210/215/220/225  
230/235/240

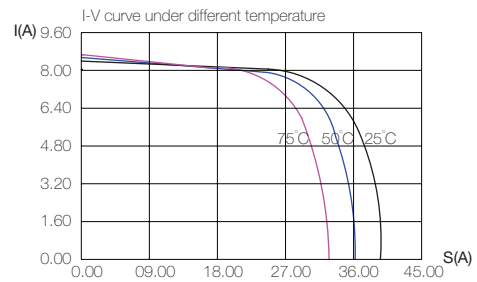
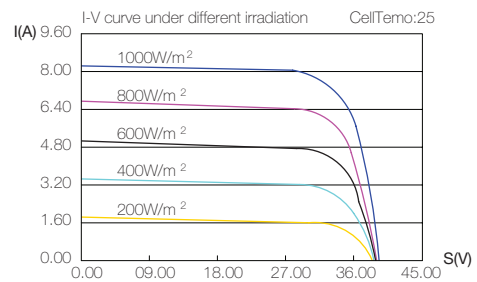
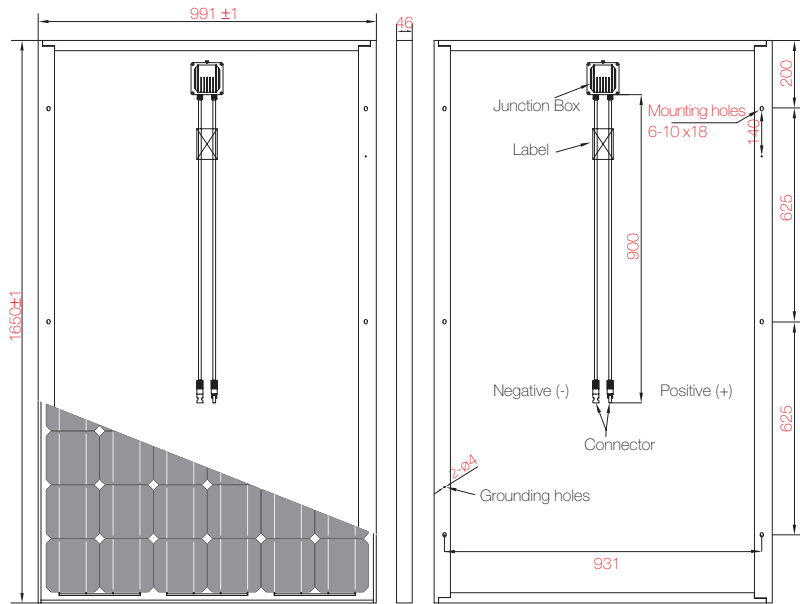


# VacSol

## SOLAR PHOTOVOLTAIC MODULE

### I-V CURVE

Output under different irradiation and the correlation between  $I_{sc}/V_{oc}$  /  $P_{max}$  and Temperature map



### MECHANICAL PARAMETERS

Cell (mm)	Mono 156x156
Weight (kg)	19.5
Dimensions (LxWxH) (mm)	1650x991x46
Cable Length (mm)	900
Cable cross section size mm <sup>2</sup>	4
No. of cells and connections	60 (10x6)
No. of diodes	3
Packing configuration	22pcs/carton

### WORKING CONDITIONS

Maximum System Voltage	DC 1000V
Operating Temp.	-40°C~+85°C
Maximum Series Fuse (A)	15
Static loading	5400Pa
Grounding conductivity	<0.1
NOCT	47±2°C
Safety Class	Class C
Insulation Resistance	100M

### GUARANTEE

5-year limited product quality warranty

Limited power warranty: 10 years at 90% of the minimal rated power output, 25 years at 80% of the minimal rated power output

