

For a Free Quote:

Web: EnergyPal.com/solar

Call: 1-800-990-3725

Email: contact@energypal.com

EnergyPal

Solar Panel Guide Specification Data Sheet

VacSol GmbH

VSP6-210-240

VSP6-240

Also available on the web at
EnergyPal.com/vacsol-gmbh-solar-panels/vsp6-240

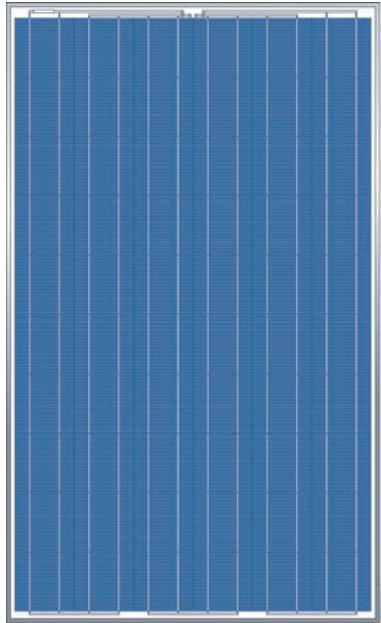
VSP6

210/215/220/225
230/235/240



VacSol

SOLAR PHOTOVOLTAIC MODULE



PRODUCT OVERVIEW

- VacSol PV modules are optimally manufactured and adjusted to meet the needs of the current market; Module designed for easy installation.
- The continuous efforts in quality assurance system and certifications, the international authentication institutions of VacSol' s products demonstrate our commitment to product quality and customer requirements

MODULE CHARACTERISTICS

- Assembled by high efficiency crystalline silicon cells
- Two types: mono-crystalline and multi-crystalline
- Power range of standard module: 155W-240W (power output depends on efficiency and type of cells used)
- With or without screw frame design, strong mechanical resistance
- High transmission low iron tempered glass strong mechanical resistance
- Standard waterproof junction box, with bypass diode, which protects the module from burning caused by hot-spot effect because of shading
- High endurance to different atrocious weather, passed the IEC 61215 & IEC61730 performance test and UL1703 safety test
- 5-year quality guarantee and 10 - 25-year power output guarantee

ELECTRICAL PARAMETER

| TYPE | VSP6-210 | VSP6-215 | VSP6-220 | VSP6-225 | VSP6-230 | VSP6-235 | VSP6-240 |
|-----------------------------|------------|----------|----------|----------|----------|----------|----------|
| Rated Maximum Power at STC | 210W | 215W | 220W | 225W | 230W | 235W | 240W |
| Open Circuit Voltage (Voc) | 36.60 | 36.77 | 36.94 | 37.11 | 37.28 | 37.45 | 37.62 |
| Maximum Power Voltage (Vmp) | 29.40 | 29.60 | 29.80 | 30.00 | 30.20 | 30.40 | 30.60 |
| Maximum Power Current (Imp) | 7.14 | 7.26 | 7.38 | 7.50 | 7.62 | 7.73 | 7.84 |
| Short Circuit Current (Isc) | 8.10 | 8.16 | 8.25 | 8.33 | 8.42 | 8.50 | 8.59 |
| Power Tolerance | ±3% | | | | | | |
| α_{Pm} | -0.47%/°C | | | | | | |
| r_{Voc} | -0.33%/°C | | | | | | |
| α_{Isc} | +0.036%/°C | | | | | | |



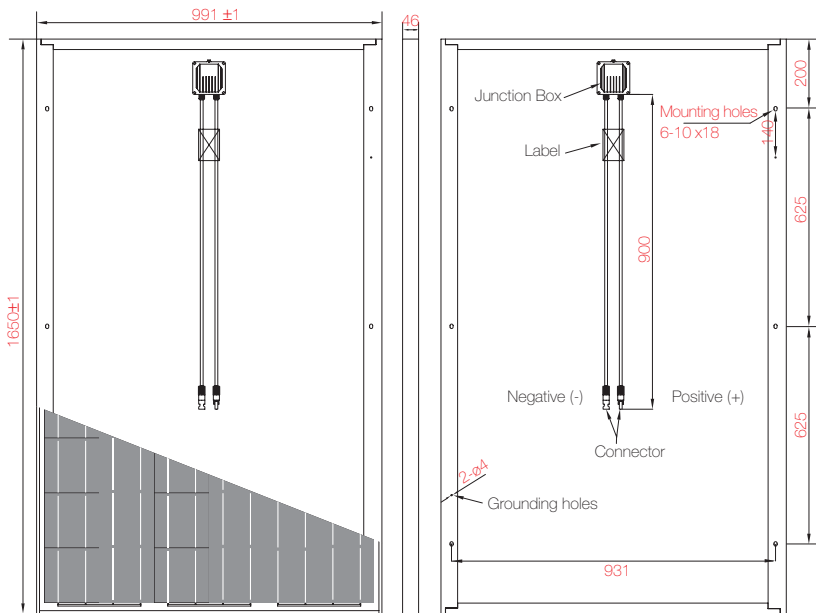
VSP6

210/215/220/225
230/235/240



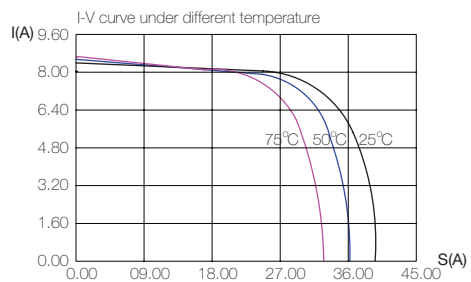
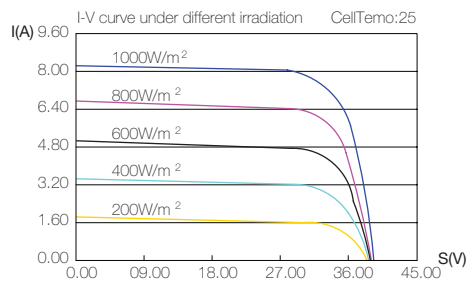
VacSol

SOLAR PHOTOVOLTAIC MODULE



I-V CURVE

Output under different irradiation and the correlation between $I_{sc}/V_{oc}/P_{max}$ and Temperature map



MECHANICAL PARAMETERS

| | |
|---------------------------------|--------------|
| Cell (mm) | Poly 156x156 |
| Weight (kg) | 19.5 |
| Dimensions (LxWxH) (mm) | 1650x991x46 |
| Cable Length (mm) | 900 |
| Cable cross section size mm^2 | 4 |
| No. of cells and connections | 60 (10x6) |
| No. of diodes | 3 |
| Packing configuration | 22pcs/carton |

WORKING CONDITIONS

| | |
|-------------------------|----------------------------------|
| Maximum System Voltage | DC 1000V |
| Operating Temp. | -40 $^{\circ}C$ ~+85 $^{\circ}C$ |
| Maximum Series Fuse (A) | 15 |
| Static loading | 5400Pa |
| Grounding conductivity | <0.1 |
| NOCT | 47±2 $^{\circ}C$ |
| Safety Class | Class C |
| Insulation Resistance | 100M |

GUARANTEE

5-year limited product quality warranty

Limited power warranty: 10 years at 90% of the minimal rated power output, 25 years at 80% of the minimal rated power output

