

For a Free Quote:

Web: EnergyPal.com/solar

Call: 1-800-990-3725

Email: contact@energypal.com

EnergyPal

Solar Panel Guide Specification Data Sheet

Enhance Photovoltaics Enhance XMe265-280 XMe275

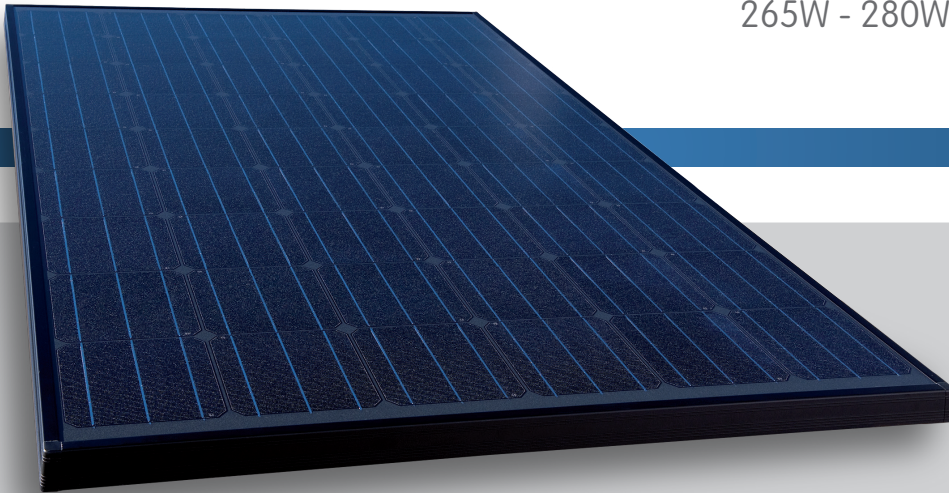
Also available on the web at
EnergyPal.com/enhance-photovoltaics-solar-panels/xme275



European Produced Module



265W - 280W Monocrystalline Module



Made in Austria

Enhance Photovoltaic Modules surpass all international recognised quality standards and are produced by one of the world's leading fully vertical integrated photovoltaic module producers on the world's most advanced European produced fully automated robotic production lines, this process ensures exceptionally high quality, reliability and performance, even in low light conditions.



High Module Efficiency

Module efficiency up to 17.38% achieved through advanced cell technology and manufacturing capabilities.



Extended wind & snow load tests

Pass ASTM E330; Maximum wind speed: 197 km/h (safety factor 3) (short-side installation \geq 2400 Pa guaranteed)



Positive Power tolerance

Positive tolerance of up to +5 watts delivers higher outputs.



Excellent weak light performance

3.5% relative efficiency reduction at low irradiance ($200W/m^2$)



Anti-PID

Potential Induced Degradation Test Certified according to IEC 62804.



Prolonged aging test

2000 hour damp heat test; 400 Thermal cycles

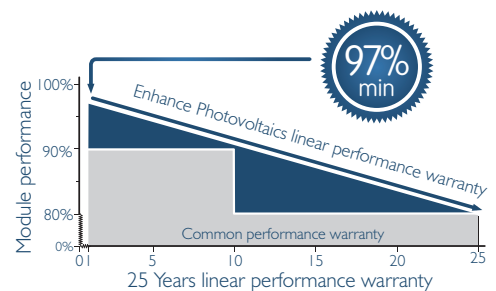


Corrosive Resistant

Robust design & materials ensures reliability whilst operating under the most extreme conditions such as marine or farming environments.

Advantages of Enhance Photovoltaic Modules

1. Product warranty of 12.5 years and a linear performance warranty of 25 years
2. Extremely solid (5400Pa), nevertheless very light module construction (under 20kg)
3. Use of high quality components from branded manufacturers
4. Intelligent frame concept for technical safety, flexible and homogeneous design
5. Optimised weak light behaviour



Comprehensive Warranty

Market leading 12.5 year product warranty

Linear Warranty

Guaranteed 25 year linear performance. Min 97% after the first year, afterwards Max 0.6% reduction p.a up to 25 years.

www.enhance-photovoltaics.com

Enhance Photovoltaic Modules surpass all the quality standards stipulated in European markets. The products are manufactured exclusively in Austria using the very latest equipment. Our solar modules are delivered with innovative aluminium frames with flexible mounting options. These output and yield optimised solar modules are designed mainly for the use in on grid systems.

Enhance Photovoltaics XPe 250 / 255 / 260 Wp poly

Enhance Photovoltaics XMe 265 / 270 / 275 / 280 Wp mono

Module Specifications

Type	P _{mpp} (W _p)	U _{mpp} (V)	I _{mpp} (A)	U _{oc} (V)	I _{sc} (A)	cell efficiency	module efficiency	area per kWp
XPe 250 Poly	250 Wp	30.56 V	8.21 A	37.84 V	8.85 A	17.68 %	15.52 %	6.61 m ²
XPe 255 Poly	255 Wp	30.72 V	8.30 A	37.96 V	8.87 A	17.96 %	15.73 %	6.48 m ²
XPe 260 Poly	260 Wp	30.75 V	8.37 A	37.99 V	8.90 A	18.22 %	15.94 %	6.36 m ²
XMe 265 Mono	265 Wp	30.81 V	8.69 A	37.83 V	9.11 A	19.26 %	16.49 %	6.24 m ²
XMe 270 Mono	270 Wp	30.84 V	8.83 A	37.87 V	9.16 A	19.56 %	16.76 %	6.12 m ²
XMe 275 Mono	275 Wp	30.89 V	8.93 A	37.92 V	9.19 A	19.75 %	17.07 %	6.00 m ²
XMe 280 Mono	280 Wp	30.93 V	8.99 A	37.98 V	9.23 A	19.94 %	17.38 %	5.90 m ²

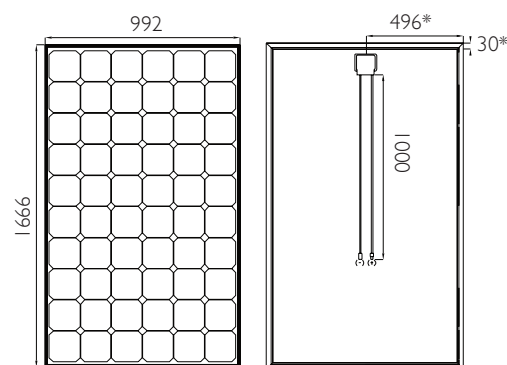
Electrical Data

Item	Specification
60 Crystalline Cells:	156 mm x 156 mm
Connecting System:	Tyco-PV4, MC4 - compatible plug in connector 4 mm ²
Max System Voltage:	1000 V DC
Power Tolerance:	(+5W / -0W) Measurement: STC (standard test conditions)
Temperature coefficients:	Poly: P _{mpp} = -0.405%/K / U _{oc} = -1.14 mV/K / I _{sc} = +4.1 mA/K Mono: P _{mpp} = -0.37%/K / U _{oc} = -90.7 mV/K / I _{sc} = +2.85 mA/K
Ambient Temperature:	+85°C to -40°C
Cable Length:	2 x 1000 mm
Bypass Diodes:	3pcs, Tyco SL1515
Efficiency Guarantee:	min 97% in the first year; afterwards max 0.6% reduction p.a up to 25yrs
Product Guarantee:	12.5 Years

Technical Data

Item	Specification
With aluminium frame:	1666 mm x 992 mm x 40 mm (+/- 2mm)
Laminate:	1659 mm x 985 mm x 4.5mm (junction box height 22.5mm)
Weight With/Without Frame:	19.50 kg / 17.50 kg
Glass Specification:	Solar Glass ESG 3.2mm with high-strength antireflective coating
Encapsulation Material:	STRE, Vistasolar
Backside Material:	Isovoltaic
Test Certificate:	IEC 61215, Ed 2 incl. mechanical load test up to 5400pa IEC 61730; IP65, MCS - Certificate
Extended hail test:	Grainsize 25mm, max velocity of 46 m/s (165.6 km/h) and Grainsize 55mm, max velocity of 33.5 m/s (120.6 km/h)
Salt Mist corrosion test:	Min of 96 hours continuous exposure to a highly concentrated salt mist
Packaging:	24 modules / pal. 672 modules / container.

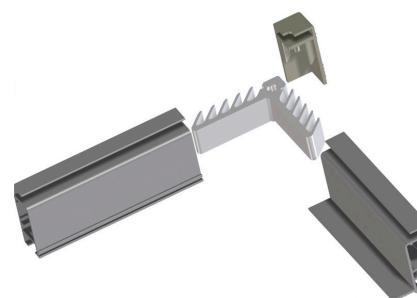
Front & Back View



All Dimensions in mm
* Tolerance +/- 5mm

Intelligent Frame Concept

- New 40mm frame with plastic edge connector
- Robust structure and optimised weight
- No Sharp edges



Contact Details

SOLFEX energy systems
Units 3-5
Charnley Fold Industrial Estate
Bamber Bridge, Preston
Lancashire, PR5 6PS

T - 00 44 1772 312847
F - 00 44 1772 335277
E - photovoltaicsales@solfex.co.uk
W - www.solfex.co.uk

