

For a Free Quote:

Web: EnergyPal.com/solar

Call: 1-800-990-3725

Email: contact@energypal.com

EnergyPal

Solar Panel Guide Specification Data Sheet

**Zytech Solar
ZT250-255P
ZT250P**

Also available on the web at
EnergyPal.com/zytech-solar-solar-panels/zt250p

ZT Series Polycrystalline

Solar Module

250P/255P/260P



Efficiency

High Module Conversion Efficiencies using three or four bus bars per cell*

Warranty

Peace of Mind Guaranteed with a twenty-five Year Linear Power Warranty and Product Quality Ensured for ten years

Certifications

IEC 61215:2005, IEC 61730:2004, UL 1703-3rd Ed: 2014, ULC/ORD C1703-01:2014, ISO 9001:2008, PSK 024:2008

Tolerance

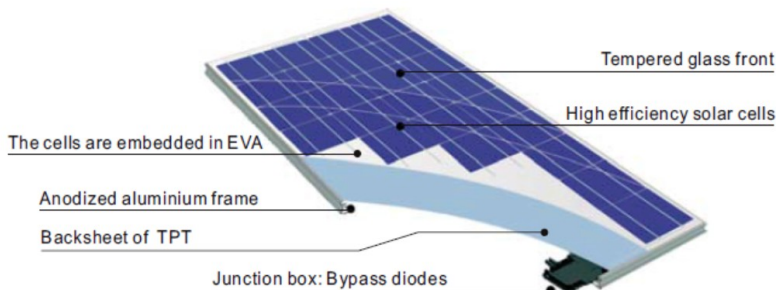
Strict quality control guarantees higher average power output according to tolerance -3% to +3%

Optimized Strength

Minimum standard for wind 2700Pa to a Mechanical load capacity up to 5400Pa meet customer's needs for durability on high mountains, sea shores, & paths between buildings



Module Construction



EMPOWERING You
To Change The Future

Zytech was founded in Zaragoza (Spain) in 2005. Since then the group has progressively increased its infrastructure and production capacity to become a global power with offices and headquarters in Spain, Germany, France, Italy, BENELUX, Mexico, United States of America, Korea, and Malaysia.

Zytech takes pride in their R&D department which specializes in product enhancement, state-of-the-art machinery and rigorous quality control that guarantees an European quality product at the best price.



www.zytechsolar.com

ZT Series Polycrystalline

Solar Module



250P/255P/260P

Cell Data

Technology	Polycrystalline Silicon
Number Per Module	60
Dimension	156 × 156mm (6 inches)
Orientation	6 × 10

Thermal Data

Nominal Operating Cell Temperature (NOCT)	45°C ± 2°C
Temperature Coefficient of Voc	- 0.275% / °C
Temperature Coefficient of Isc	+0.023 % / °C
Temperature Coefficient of Power Pmax	- 0.40 % / °C

Electrical Data (STC)

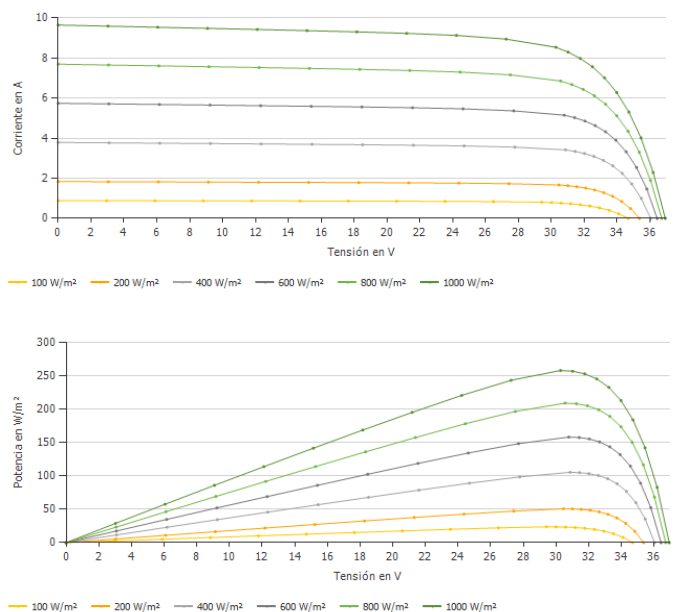
		ZT250P	ZT255P	ZT260P
Maximum power (W)	Pmax	250	255	260
Power Output Tolerance (%)		±3%		
Maximum Power Voltage (V)	Vmpp	30.39	30.41	30.43
Maximum Power Current (A)	Imp	8.23	8.28	8.54
Open Circuit Voltage (V)	Voc	36.97	37.10	37.12
Short Circuit Current (A)	Isc	9.29	9.34	9.65
Module Efficiency (%)		15.40%	15.71%	16.01%

* At Standard Conditions (STC) Irradiance 1000 watt/m², spectrum AM 1,5 at a cell temperature of 25°C

System Integrated Parameters

Maximum System Voltage SCII	1000 VDC (UL1000V)
Maximum Reverse Current	Do not apply external voltages larger than Voc to the module
Operating Temperature	-40~+85°C
Max Series Fuse Rating	15A

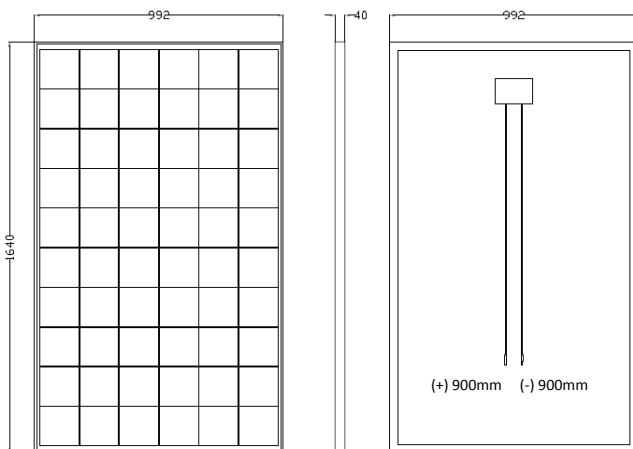
IU and PU Curve



Front

Side

Rear



Physical Characteristics

Module Dimension (L×W×H)	1640×992×40mm. Code: PV30017 (ZT260P)
Weight	18 kg
Module IP Grade / J-Box	IP67 Module Rated / 3 Bypass Diodes IP67
Connector	MC4 or MC4 Compatible
Glass	3.2mm (0.13 in), High Transmission, AR Coated Tempered Glass
Cable	4 mm ² PV cable, 900mm
Frame	Silver/ Black Anodized Aluminum Alloy

Packing Configuration

Modules Per Pallet	26
Pallet Per 40' HQ Container	28 (728 pcs)
Packing Box Dimension (L×W×H)	1700×1150×1040 mm
Packing Orientation	Side

ZYTECH SOLAR S.L.

P. Industrial Centrovía- C/R. Janeiro, 12
50198 La Muela (Zaragoza) SPAIN
Tel: +34 976 141819 / Fax: +34 976+141818
info@zytech.es
www.zytechsolar.es

Zytech Solar reserves the right to change specifications without notice

*According to cells brand